



① FRONT
3/16" = 1'-0"

**ROBINSON
RESIDENTIAL**
PERSONALIZING HOME DESIGN

PROJECT **BI LEVEL STOCK #2**

2232 2nd AVENUE
REGINA, SASKATCHEWAN
CANADA S4R 1K3
TEL: (306) 352-6617
FAX: (306) 352-6619

DISCLAIMER

1. Copyright of these plans remains with Robinson Residential Design Inc. Duplication of these plans in whole or in part is strictly prohibited, without prior written permission from Robinson Residential Design Inc.
2. Drawings are not to be scaled.

3. All plans are drawn to suit the National Building Code of Canada (2010). Due to local building codes, zoning regulations and climatic conditions, plans must be reviewed by local building officials prior to construction. All structural components indicated on these drawings must be reviewed and engineered by a licensed architect or engineer.

4. Robinson Residential Design Inc. assumes no liability or responsibility for any errors, omissions and any incidental indirect or consequential damages whatsoever arising from the use of these drawings or the information provided therein.
5. Builder to conform to National Building Code of Canada (2010) Part 9.

SCALE
3/16" = 1'-0"

BUILDER
HOMES BY DEVERAUX

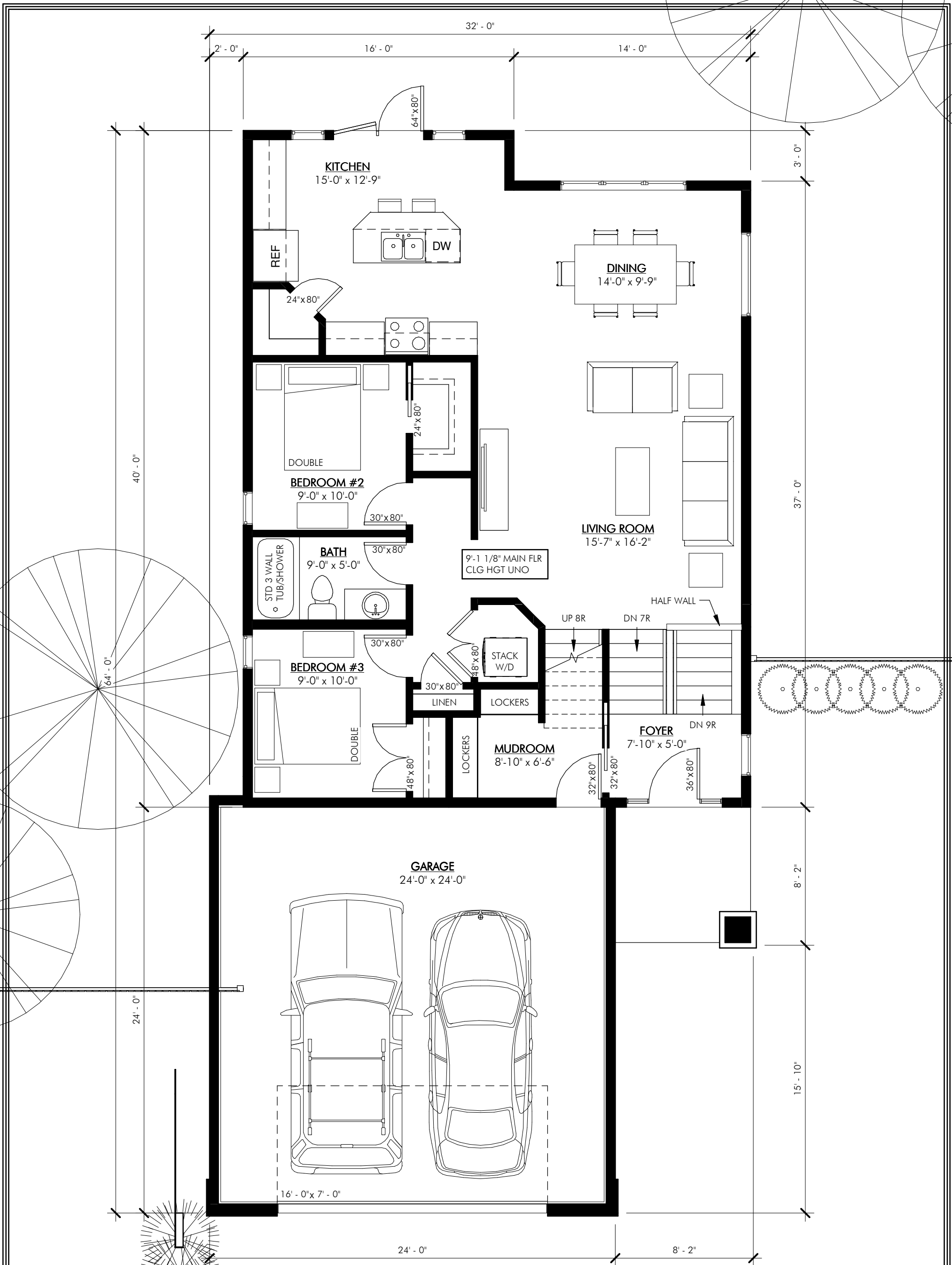
DATE
JULY 7, 2016

DRAWING NO.

SHEET NAME
EXTERIOR ELEVATIONS

DESIGNED BY
BUSHKO
DRAWN BY
LUGRIN

A-1



MAIN FLOOR PLAN - 1158 SQ. FT.
 TOTAL AREA: 1613 SQ. FT.
 3/16" = 1'-0"

**ROBINSON
 RESIDENTIAL**
 PERSONALIZING HOME DESIGN

PROJECT **BI LEVEL STOCK #2**

2232 2nd AVENUE
 REGINA, SASKATCHEWAN
 CANADA S4R 1K3
 TEL: (306) 352-6617
 FAX: (306) 352-6619

DISCLAIMER
 1. Copyright of these plans remains with Robinson Residential Design Inc. Duplication of these plans in whole or in part is strictly prohibited, without prior written permission from Robinson Residential Design Inc.
 2. Drawings are not to be scaled.

3. All plans are drawn to suit the National Building Code of Canada (2010). Due to local building codes, zoning regulations and climatic conditions, plans must be reviewed by local building officials prior to construction. All structural components indicated on these drawings must be reviewed and engineered by a licensed architect or engineer.

4. Robinson Residential Design Inc. assumes no liability or responsibility for any errors, omissions and any incidental indirect or consequential damages whatsoever arising from the use of these drawings or the information provided therein.
 5. Builder to conform to National Building Code of Canada (2010) Part 9.

SCALE
 3/16" = 1'-0"

SHEET NAME
MAIN FLOOR PLAN

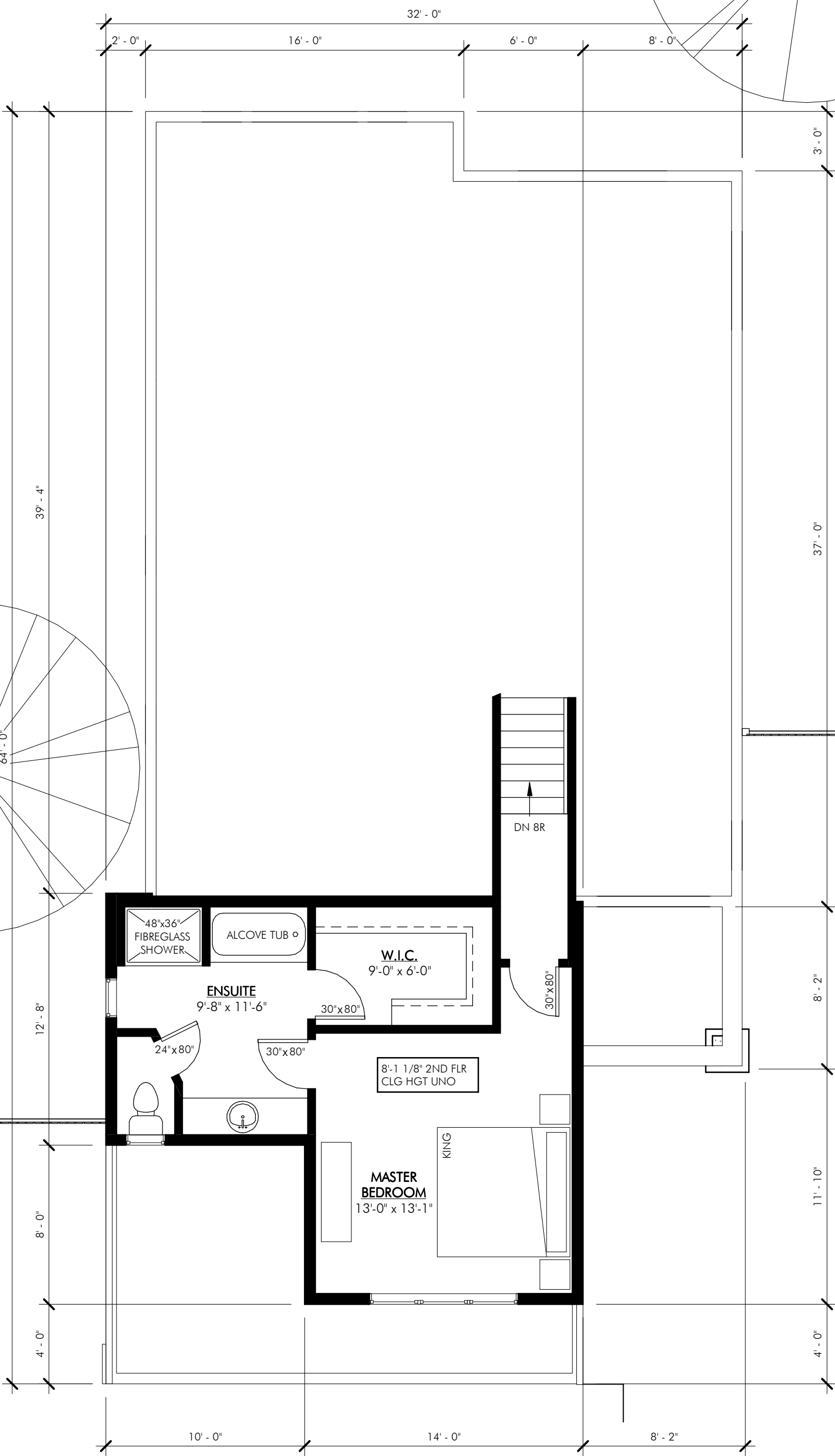
BUILDER
 HOMES BY DEVERAUX

DATE
 JULY 7, 2016

DESIGNED BY
BUSHKO
 DRAWN BY
LUGRIN

DRAWING NO.

A-2



SECOND FLOOR PLAN - 455 SQ. FT.
 3/16" = 1'-0"

<p>ROBINSON RESIDENTIAL PERSONALIZING HOME DESIGN</p>	<p>PROJECT BI LEVEL STOCK #2</p> <p>2232 2nd AVENUE REGINA, SASKATCHEWAN CANADA S4R 1K3 TEL: (306) 352-6617 FAX: (306) 352-6619</p>	<p>DISCLAIMER</p> <p>1. Copyright of these plans remains with Robinson Residential Design Inc. Duplication of these plans in whole or in part is strictly prohibited, without prior written permission from Robinson Residential Design Inc.</p> <p>2. Drawings are not to be scaled.</p>	<p>3. All plans are drawn to suit the National Building Code of Canada (2010). Due to local building codes, zoning regulations and climatic conditions, plans must be reviewed by local building official prior to construction. All structural components indicated on these drawings must be reviewed and engineered by a licensed architect or engineer.</p>	<p>4. Robinson Residential Design Inc. assumes no liability or responsibility for any errors, omissions and any incidental indirect or consequential damages whatsoever arising from the use of these drawings or the information provided therein.</p> <p>5. Builder to conform to National Building Code of Canada (2010) Part 9.</p>	<p>SCALE 3/16" = 1'-0"</p> <p>SHEET NAME SECOND FLOOR PLAN</p>	<p>BUILDER HOMES BY DEVERAUX</p>	<p>DATE JULY 7, 2016</p> <p>DESIGNED BY BUSHKO</p> <p>DRAWN BY LUGRIN</p>	<p>DRAWING NO. A-3</p>